

South Bay Salt Pond Restoration Project

Alviso / Santa Clara County Working Group Meeting

San Jose/Santa Clara

Water Pollution Control Plant

February 7, 2008

1

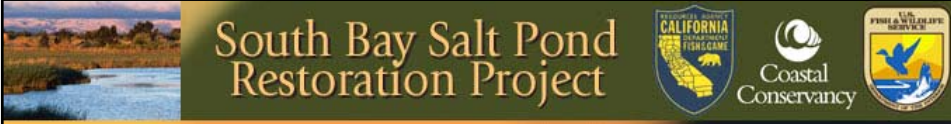


South Bay Salt Pond Restoration Project

Today's Working Group Meeting

- Welcome and Introductions
- Working Group Charter
- Final EIS/R Overview
- Refuge Public Use Compatibility Determinations
- Phase 1 in the Alviso Pond Complex
- Update on the South San Francisco Bay Shoreline Study
- Funding Opportunities
- SBSP Project Schedule
- Next Steps

2



South Bay Salt Pond Restoration Project

Alviso / Santa Clara County Working Group Charter

See Handout

3




South Bay Salt Pond Restoration Project

Overall Project Schedule

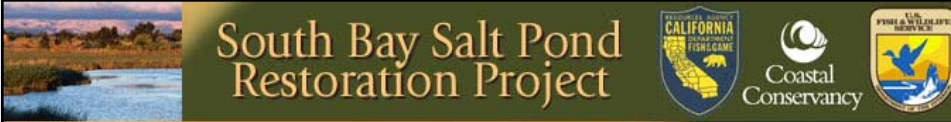
- Final EIS/EIR – Federal Register Notice December 28, 2007
- Record of Decision (including Compatibility Determinations) and Permitting – Early 2008
- Phase 1 Implementation – 2008 thru 2010
- Future actions and phases – the next 30+ years

4



**South Bay Salt Pond
Restoration Project**

Final EIS/EIR and Overview of Changes



**South Bay Salt Pond
Restoration Project**

Basic Elements of Final EIS/R

- Project approach is unchanged.
- Alternatives B (50:50) and C (90:10) have only minor changes.
- Phase 1 has only minor changes.
- Funding has been and will continue to be key to implementation.

3,395 pages



South Bay Salt Pond Restoration Project

Major Comment Areas (from 114 total commenters)

- Relationship to the South San Francisco Bay Shoreline Study;
- Scope of the EIS/R;
- Preferred Alternative;
- Adaptive Management Plan Funding;
- Aircraft Bird Strikes;



South Bay Salt Pond Restoration Project

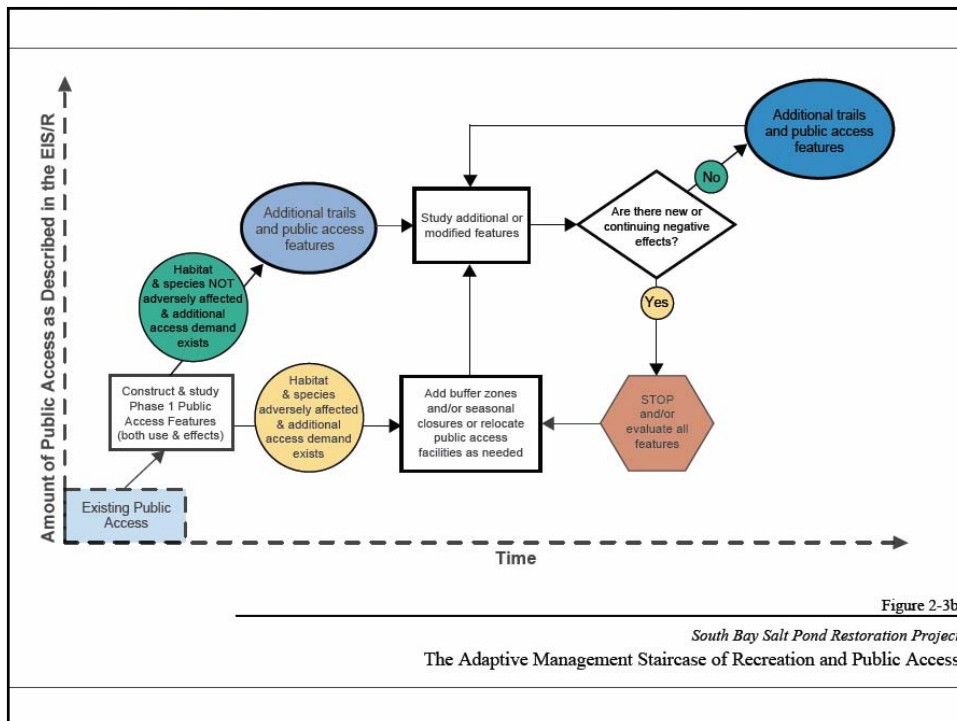
Major Comment Areas (continued)

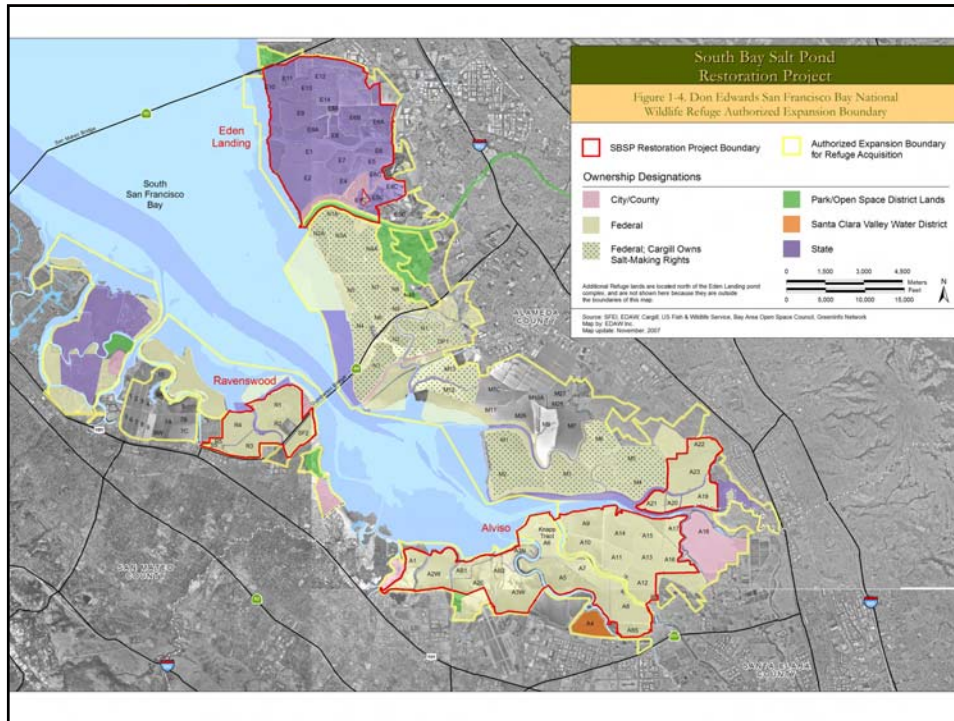
- Public Access and Impacts to Wildlife;
- Wildlife Impact Significance Thresholds;
- Flooding;
- Impacts of Sea Level Rise;
- Hunting; and
- Invasive Spartina and Other Invasive Species.



Changes in Final EIS/R

- The Corps no longer a co-lead agency.
- A Public Access Adaptive Management staircase diagram added.
- A figure displaying the DESFBNWR acquisition area included.





Other Changes in Final EIS/R

- PG&E facility modifications that are needed because of restoration will be incorporated into the Project.
- A preferred alternative, Alternative C, has been identified for legal reasons, but the document re-emphasizes the Adaptive Management nature of the Project.
- Invasive Spartina best practices included.



Refuge Public Use Compatibility Determinations



Factors Considered in Making a Compatibility Determination

- Impacts to Biological and other Resources
- Consistency with the Refuge Purpose and the Mission of the Refuge System
- Potential for Conflicts Among Uses
- Availability of Funding, Personnel and Facilities
- Public Safety
- Quality of the Experience

14



How Will Compatibility Determinations Work for this Project?

- EIS/R describes proposed public use facilities and areas
- EIS/R lists "Preliminary Phase 1 Action Compatible Uses"
- FWS will perform a compatibility determination for each potential use, including restrictions on those uses
- Compatibility determinations will feed into the Record of Decision for the SBSP Restoration Project

15



Alviso Ponds Preliminary Phase 1 Compatible Uses

- **Pond A6**
 - No Allowable Uses
- **Ponds A5, A7, A8**
 - Waterfowl hunting
- **Pond A16**
 - Wildlife Observation and Photography
 - Environmental Education and Interpretation
 - Hiking
 - Bicycling
 - Jogging

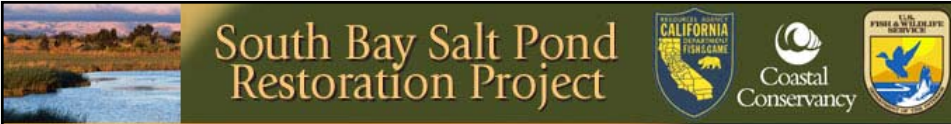
16



Alviso Ponds Preliminary Phase 1 Compatible Uses

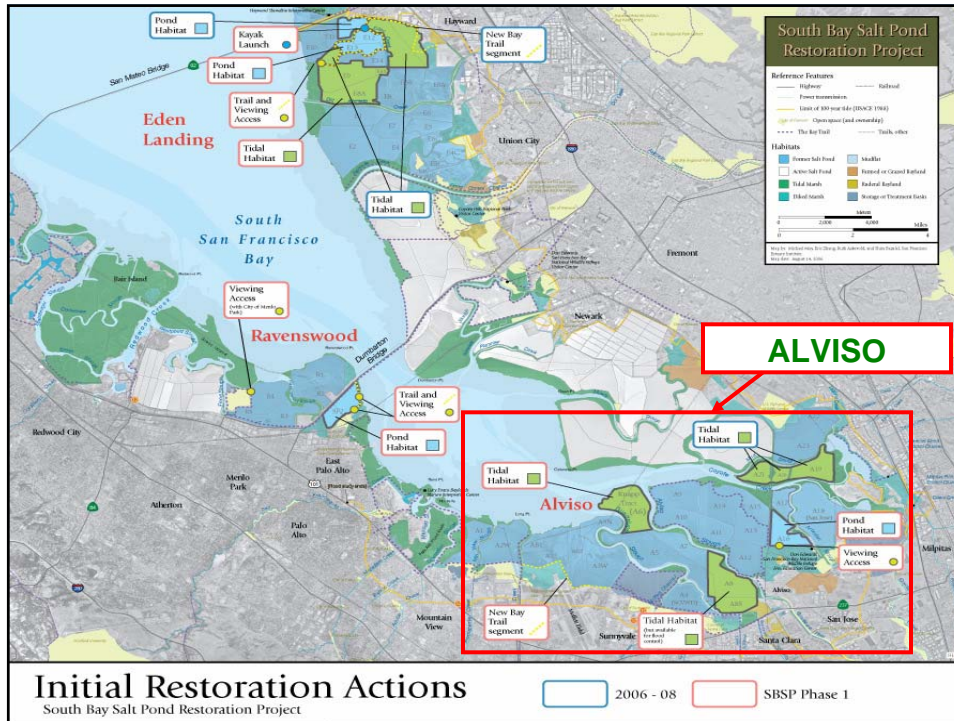
- **Sunnyvale Bay Trail**
 - Wildlife Observation and Photography
 - Environmental Education and Interpretation
 - Hiking
 - Waterfowl Hunting Access (boating to blinds only)
 - Bicycling
 - Jogging

17



Phase 1 in the Alviso Pond Complex

18



South Bay Salt Pond Restoration Project

Logos: CALIFORNIA FISH & WILDLIFE GAME, Coastal Conservancy, FISH & WILDLIFE

Phase 1 Alviso

- 360 acres of tidal habitat restoration (A6)
- 570 acres of muted tidal restoration (A8)
- 240 acres of enhanced shorebird habitat (A16)
- 2.5 miles of new trail in the Bay Trail system (near Moffett Field)

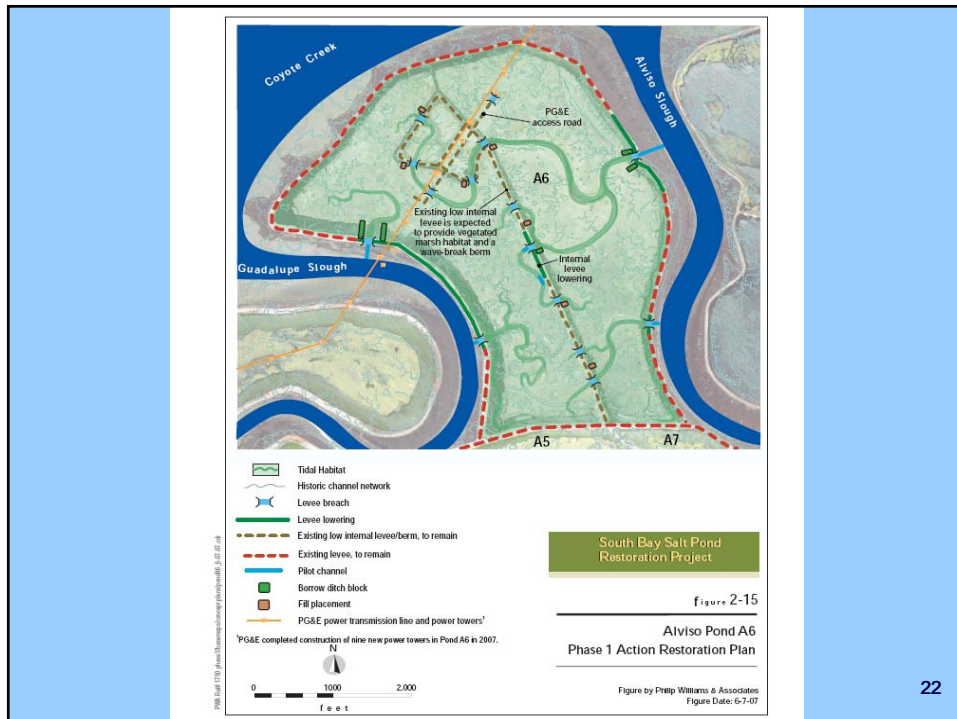
20

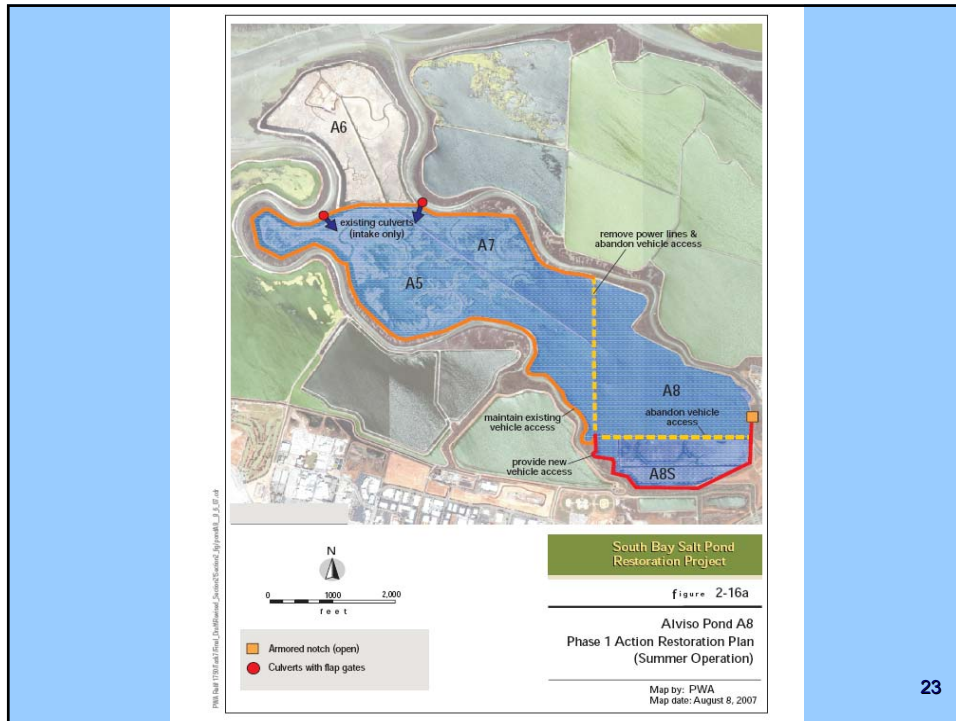
South Bay Salt Pond Restoration Project

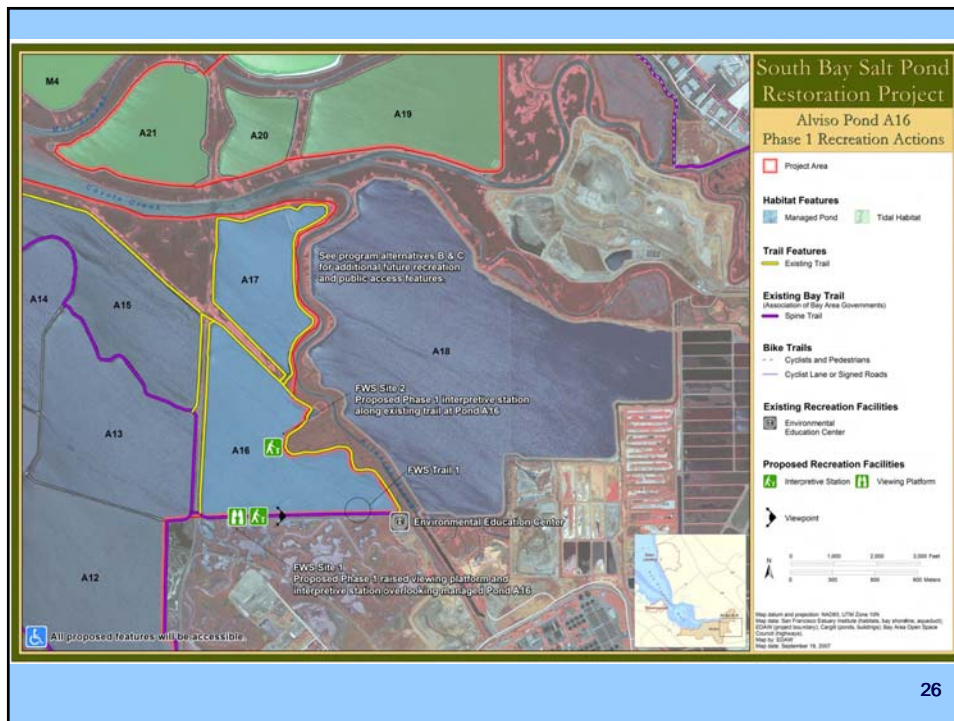
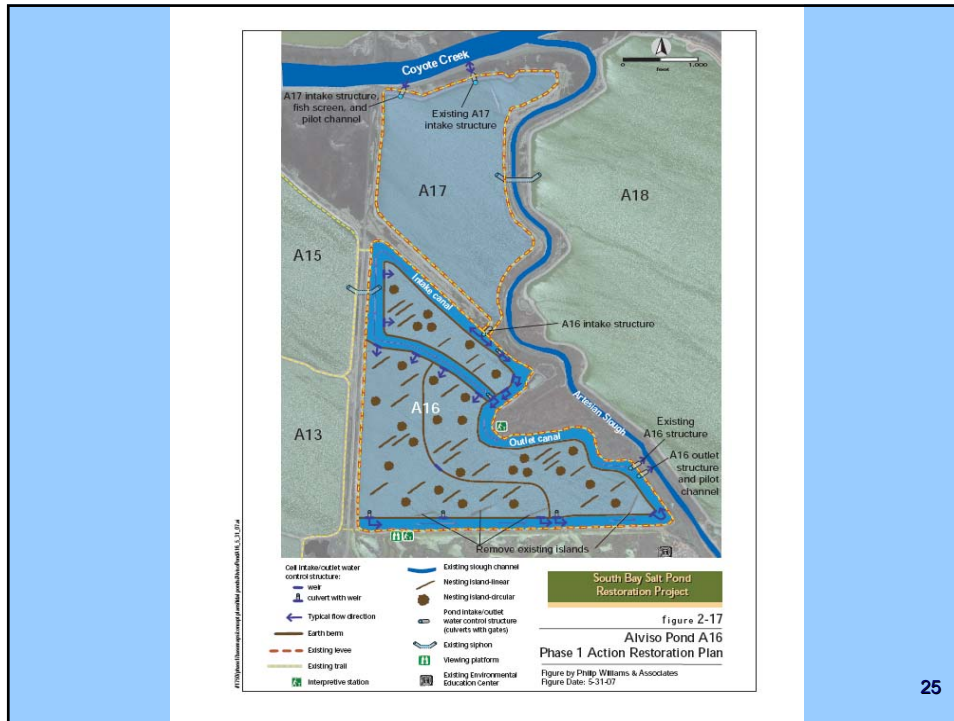
Phase 1 Applied Studies

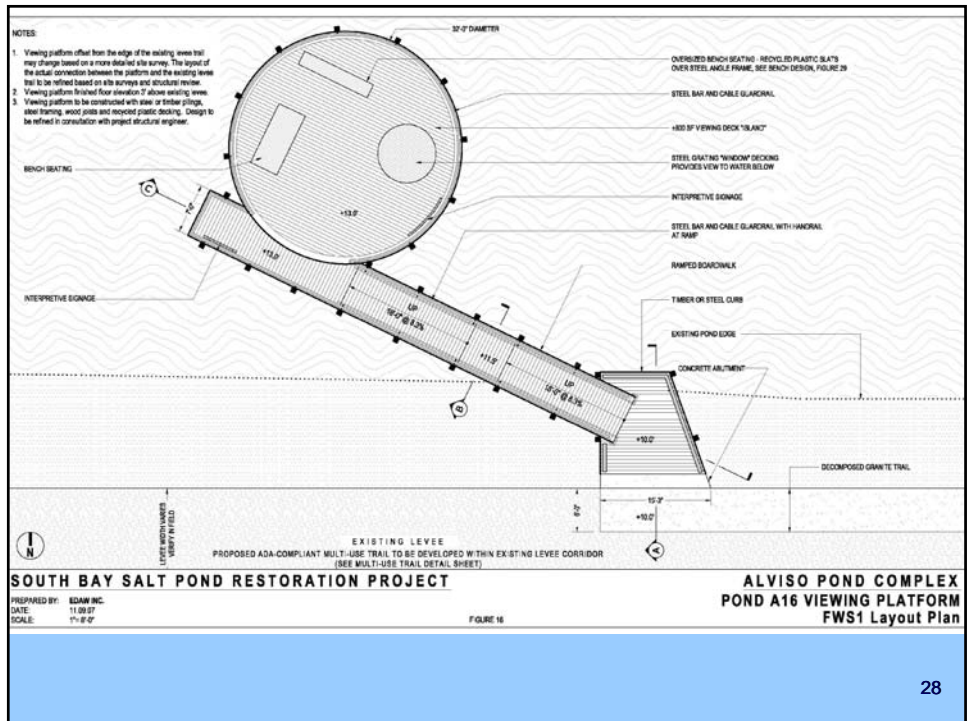
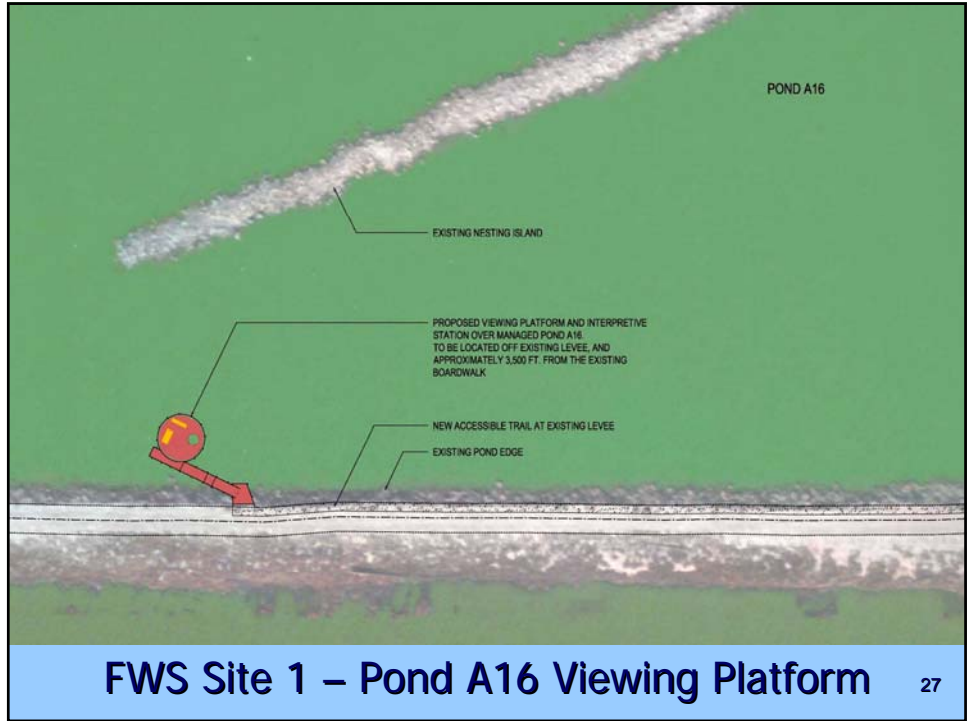
- **Pond A16**
 - Reconfigured pond performance
- **Pond A8**
 - Mercury effects
 - Slough scour and flood control
- **Pond A6**
 - California Gulls

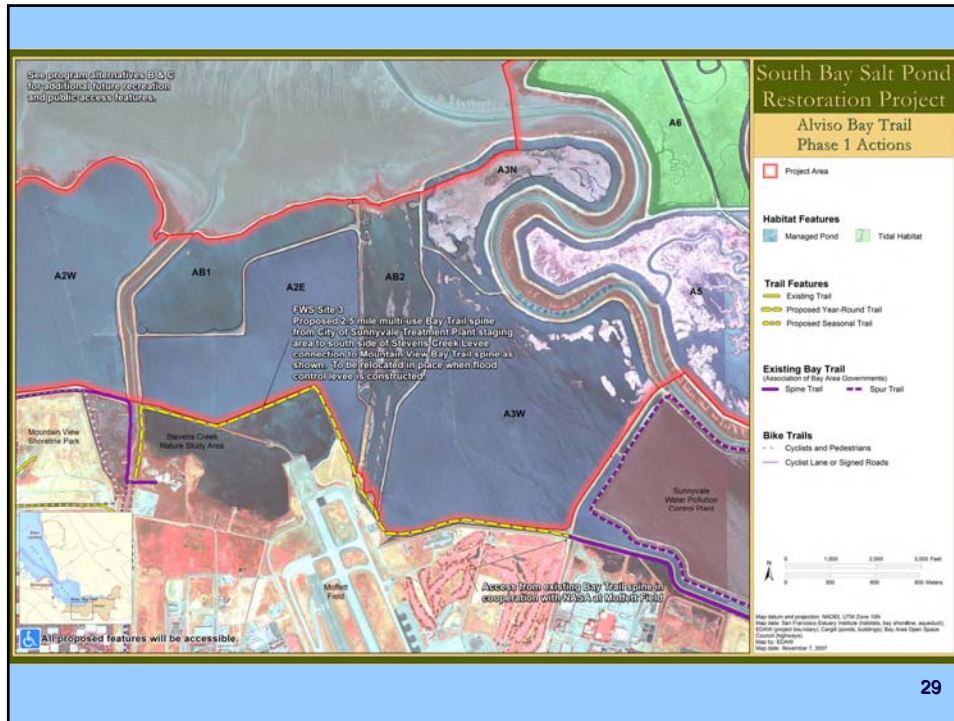
21











Sunnyvale Bay Trail Alignment (2.4 mile trail)



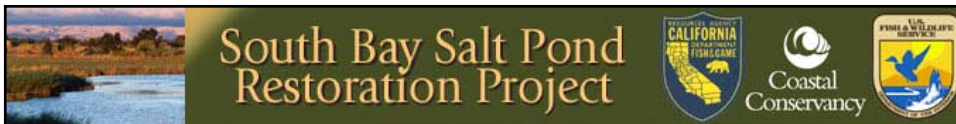
Collaborative problem solving is bridging this gap.



Trail will allow year-round access to an area previously closed to the public.

Bay Trail Steering Committee approved funding on December 13.

31



Sunnyvale Bay Trail Segment

- Trail upgrades will consist of gravel, gates, regulatory and interpretive signage, and benches.
- Coastal Conservancy, South Bay Salt Pond Restoration Project, and U.S. Navy are providing matching contributions.
- Total project cost: \$198,250.

32

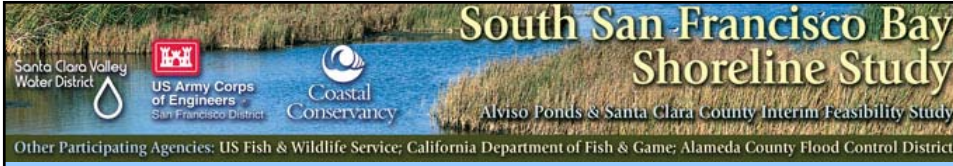


South Bay Salt Pond Restoration Project

CALIFORNIA DEPARTMENT OF FISH & GAME
Coastal Conservancy
U.S. FISH & WILDLIFE SERVICE

Questions & Discussion

33



South San Francisco Bay Shoreline Study

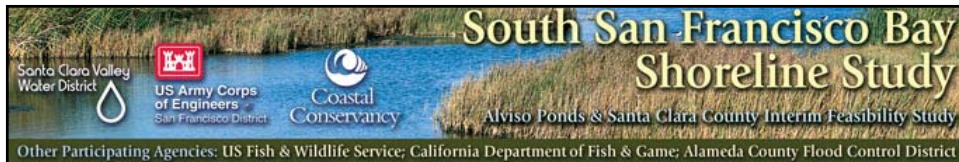
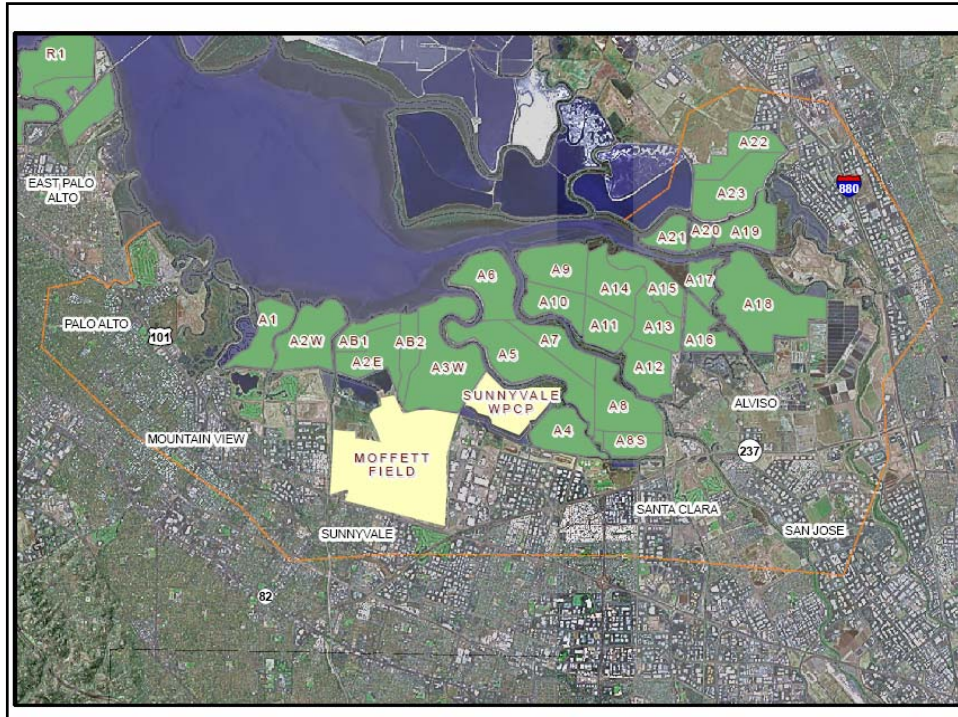
Santa Clara Valley Water District
US Army Corps of Engineers San Francisco District
Coastal Conservancy
Alviso Ponds & Santa Clara County Interim Feasibility Study

Other Participating Agencies: US Fish & Wildlife Service; California Department of Fish & Game; Alameda County Flood Control District

Shoreline Study Update

February 7, 2008

34



Upcoming in 2008

- Completion of "Without Project" Flood Plain maps
- Provide basis for Economic Damage Assessment
- Lay groundwork for Early Implementation Project



South San Francisco Bay Shoreline Study
Alviso Ponds & Santa Clara County Interim Feasibility Study

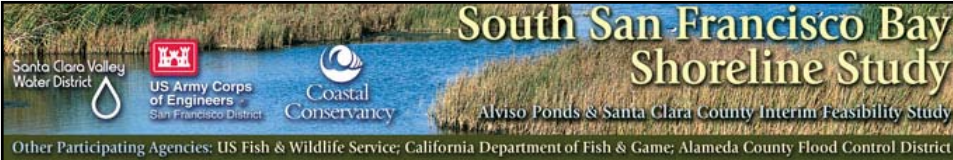
Santa Clara Valley Water District | US Army Corps of Engineers San Francisco District | Coastal Conservancy

Other Participating Agencies: US Fish & Wildlife Service; California Department of Fish & Game; Alameda County Flood Control District

Study Schedule

- Without Project Conditions & Preliminary Alternatives – Fall 2008
- Final Alternatives – Fall 2010
- Final Feasibility Report & EIS/R– Summer 2011
- Chief's Report (to OMB) – Spring 2012

37



South San Francisco Bay Shoreline Study
Alviso Ponds & Santa Clara County Interim Feasibility Study

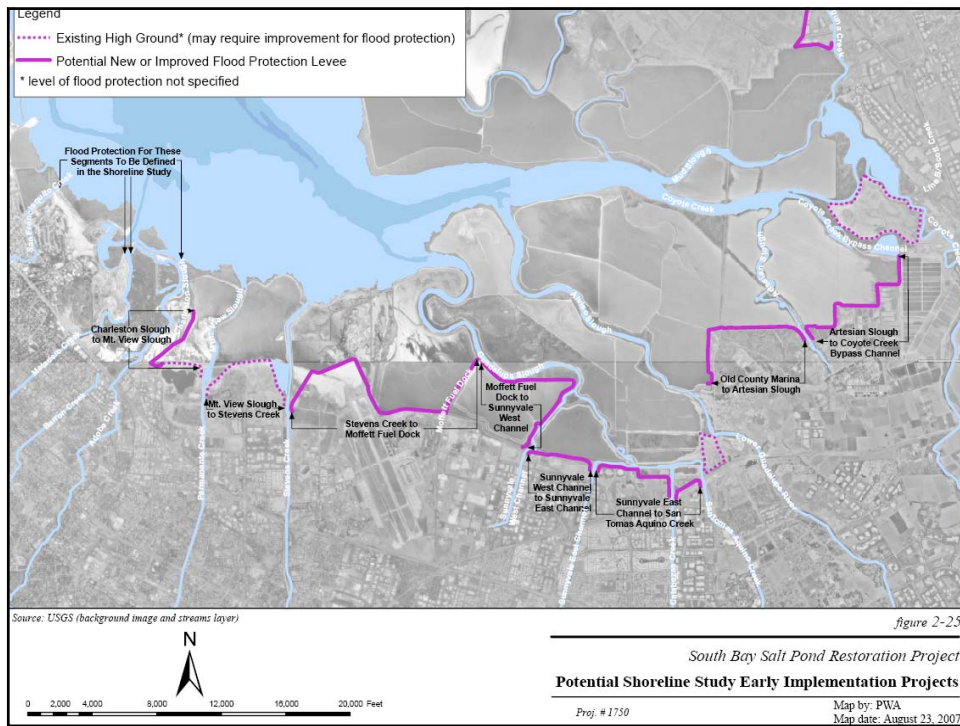
Santa Clara Valley Water District | US Army Corps of Engineers San Francisco District | Coastal Conservancy

Other Participating Agencies: US Fish & Wildlife Service; California Department of Fish & Game; Alameda County Flood Control District

Early Implementation

- Start one part of project before study is complete
- Requires non-Federal funding
- Receive credit from Corps for future project costs
- Need enough information from study to start (e.g. flood plain map)

38



South San Francisco Bay
Shoreline Study

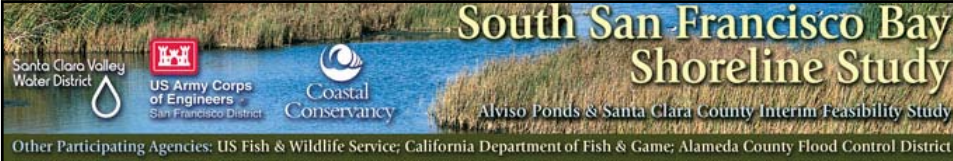
Alviso Ponds & Santa Clara County Interim Feasibility Study

Other Participating Agencies: US Fish & Wildlife Service; California Department of Fish & Game; Alameda County Flood Control District

Funding Status

- Corps has actually received much less than needed to meet the project schedule
- Project delays

40



South San Francisco Bay Shoreline Study
Alviso Ponds & Santa Clara County Interim Feasibility Study

Santa Clara Valley Water District | US Army Corps of Engineers San Francisco District | Coastal Conservancy

Other Participating Agencies: US Fish & Wildlife Service; California Department of Fish & Game; Alameda County Flood Control District

2009 Federal Budget Request

- \$2.8 million for Shoreline Study (Corps)
- \$1 million for levee maintenance (FWS)
- \$5.15 million for South Bay Salt Ponds restoration actions & science support (FWS, NASA, USGS)

41



South San Francisco Bay Shoreline Study
Alviso Ponds & Santa Clara County Interim Feasibility Study


Santa Clara Valley Water District | US Army Corps of Engineers San Francisco District | Coastal Conservancy

Other Participating Agencies: US Fish & Wildlife Service; California Department of Fish & Game; Alameda County Flood Control District

Contact Information

- Beth Dyer, Santa Clara Valley Water District,
bdyer@valleywater.org
- Brenda Buxton, Coastal Conservancy,
bbuxton@scc.ca.gov
- Yvonne LeTellier, US Army Corps of Engineers,
Yvonne.C.LeTellier@spd02.usace.army.mil

42



South San Francisco Bay Shoreline Study
Alviso Ponds & Santa Clara County Interim Feasibility Study

Santa Clara Valley Water District | US Army Corps of Engineers San Francisco District | Coastal Conservancy

Other Participating Agencies: US Fish & Wildlife Service; California Department of Fish & Game; Alameda County Flood Control District

Shoreline Study Questions?

43



South Bay Salt Pond Restoration Project

CALIFORNIA DEPARTMENT OF FISH & GAME | Coastal Conservancy | U.S. FISH & WILDLIFE SERVICE

Funding Opportunities

- Bay Trail funds
- USFWS FY '09 appropriation?
- NAWCA grant to Ducks Unlimited
- Prop. 40 grant
- SCVWD funds
- Coastal Conservancy grant(s)

44



Alviso Phase 1 Schedule

- BCDC – First Design Review Board December 10; Second Design Review Board March 11
- BCDC and Water Board hearings – April or May, 2008
- CDs and Record of Decision – April or May 2008
- Phase 1 Design completion – May 2008
- Start construction – Summer 2008

45



Next Steps

46